

VisualAutoshaping

A Whisker client

by Rudolf Cardinal

www.whiskercontrol.com

Copyright (C) Cambridge University Technical Services Ltd.

Distributed by Campden Instruments Ltd (www.campden-inst.com)



VisualAutoshaping

© Cambridge University Technical Services Ltd

All rights reserved. No parts of this work may be reproduced in any form or by any means - graphic, electronic, or mechanical, including photocopying, recording, taping, or information storage and retrieval systems - without the written permission of the publisher.

Products that are referred to in this document may be either trademarks and/or registered trademarks of the respective owners. The publisher and the author make no claim to these trademarks.

While every precaution has been taken in the preparation of this document, the publisher and the author assume no responsibility for errors or omissions, or for damages resulting from the use of information contained in this document or from the use of programs and source code that may accompany it. In no event shall the publisher and the author be liable for any loss of profit or any other commercial damage caused or alleged to have been caused directly or indirectly by this document.

Printed: December 2020 in Cambridge, UK

Creator (Whisker)

Rudolf N. Cardinal

Design and Programming (Whisker)

Rudolf N. Cardinal

Michael R. F. Aitken

Legal Advisor (CUTS)

Adjoa D. Tamakloe

Sales (Campden)

Julie Gill

Contacting the authors:

For information about Whisker, visit <http://www.whiskercontrol.com/>.

If you have sales enquiries about Whisker, contact Campden Instruments Ltd at <http://www.campden-inst.com/>.

If you have comments or technical enquiries that cannot be answered by the sales team, contact the authors:

Rudolf Cardinal (rudolf@pobox.com)

Mike Aitken (m.aitken@psychol.cam.ac.uk)

Table of Contents

Foreword	1
Part I VisualAutoshaping	2
1 About VisualAutoshaping	2
2 Required devices	2
3 Using the task	3
4 Parameters	5
5 Task details	6
Index	9

Foreword

WARNING

Whisker is a system designed for research purposes only, and should never be used to control medical apparatus or other devices that could endanger human life.

DISCLAIMER

The authors, copyright holders, and distributors disclaim all responsibility for any adverse effects that may occur as a result of a user disregarding the above warning.

1 VisualAutoshaping

1.1 About VisualAutoshaping

Purpose

Autoshaping with computer-generated visual stimuli.

Software requirements

Requires Whisker v2.0 or greater.

Data storage

- Text-based output to disk.
- ODBC data storage to a database (supplied).

Author

Rudolf Cardinal (rudolf@pobox.com).

Copyright

Copyright © Cambridge University Technical Services Ltd

Revision history

- v2.2 (14 July 2003): change to names of devices for consistency with other tasks
- v2.4 (8 March 2007): easier compilation for users.
- v3.0 (12 Jan 2009): Server default changed from "loopback" to "localhost" (Windows Vista compatibility and more general standardization).

1.2 Required devices

The program requires to claim devices in groups named **box0**, **box1**, **box2...** with device names as listed below in bold:

```
# ----- Box 0 definition
# INPUTS
line    0      box0    FLOORPANEL_REAR
line    3      box0    MAGNOSEPOKE_CENTRE
line    6      box0    MAGNOSEPOKE_REAR
line    9      box0    LOCOBEAM_LEFT
line   12      box0    LOCOBEAM_RIGHT
line   15      box0    LOCOBEAM_CENTRE

# OUTPUTS
line   24      box0    HOUSELIGHT
line   27      box0    PELLET_CENTRE
line   30      box0    PELLET_REAR

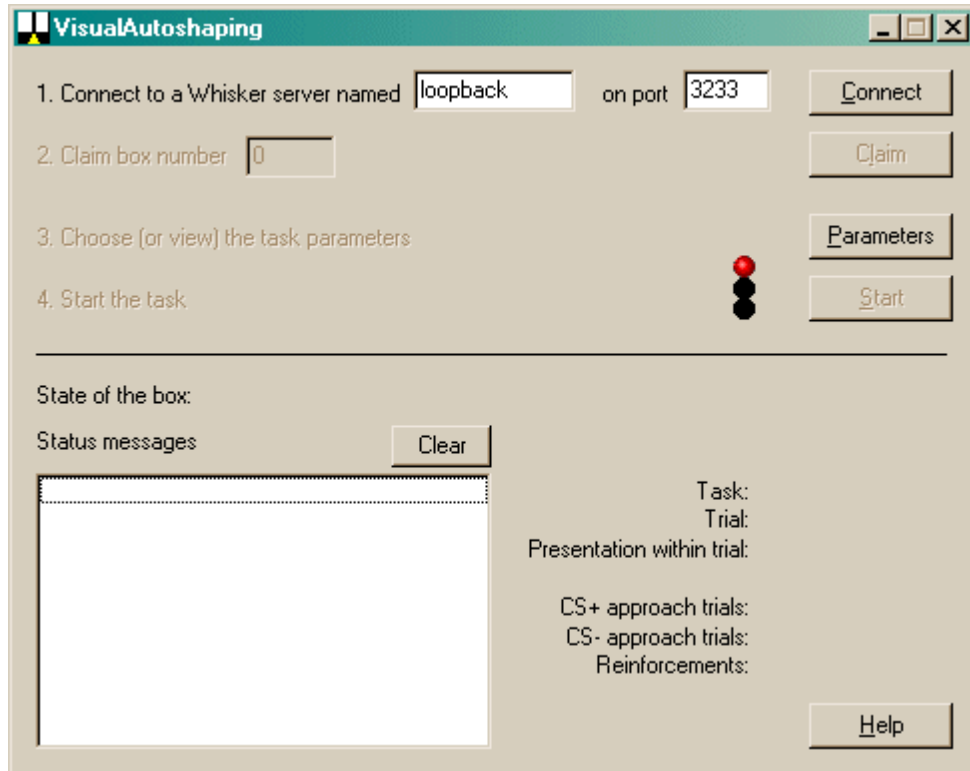
# TOUCHSCREENS
display 0      box0    SCREEN

# ... and so on for each box
```

Please ensure that these devices are available and listed in the device definition file in use by the server. (The snippet above shows an extract from a typical definition file.)

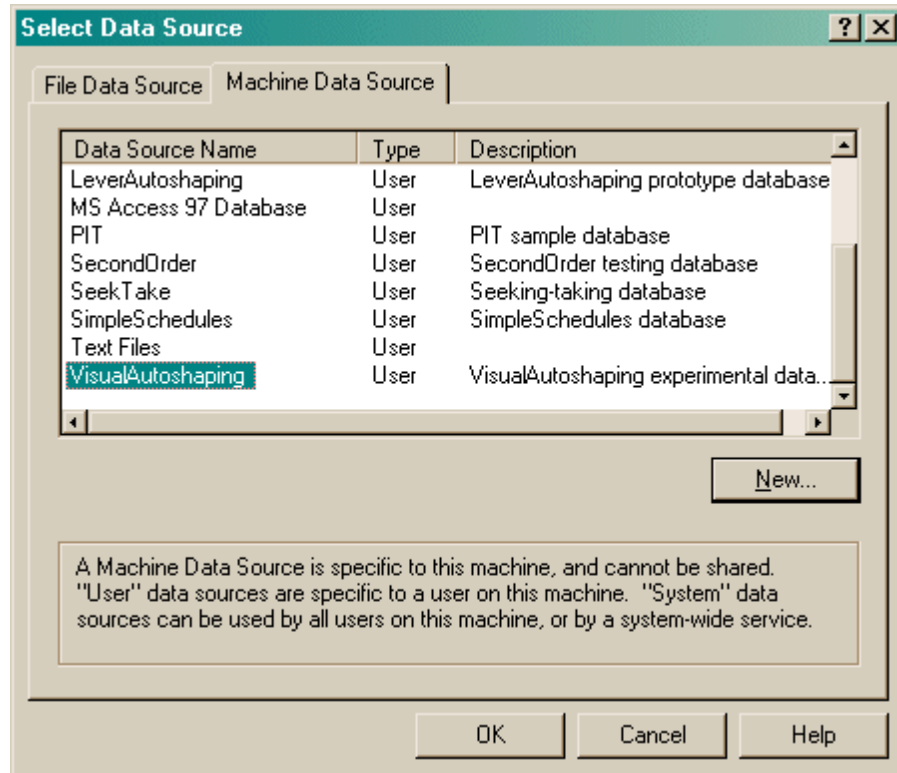
1.3 Using the task

When you run the task, the main screen looks as follows:



You must connect to a Whisker server, claim an operant chamber (box), and set up the [parameters](#) for your task. Once that's done, the traffic lights will turn amber. When you are ready, press *Start* to begin the task.

When the task finishes, it saves data to disk and pops up a new dialogue box for you to select a database to store the data to. (The data sources are configured under *Control Panel* → *ODBC*.) If you previously specified an ODBC data source in the parameters, that data source is used automatically and you will only see a dialogue box if something goes wrong and the program needs your input.



1.4 Parameters

The parameters dialogue box looks like this:

Set parameters for VisualAutoshaping

Subject details

Rat ID: Session number:
 Comment:

Data recording

test-04Sep2002-1536-VisualAutoshaping-summary.txt
ODBC data source name (see Control Panel). Blank to choose later:

Reinforcer

Pellet dispenser: Rear Centre
Number of pellets: Pulse length (ms): Time between pellets (s):

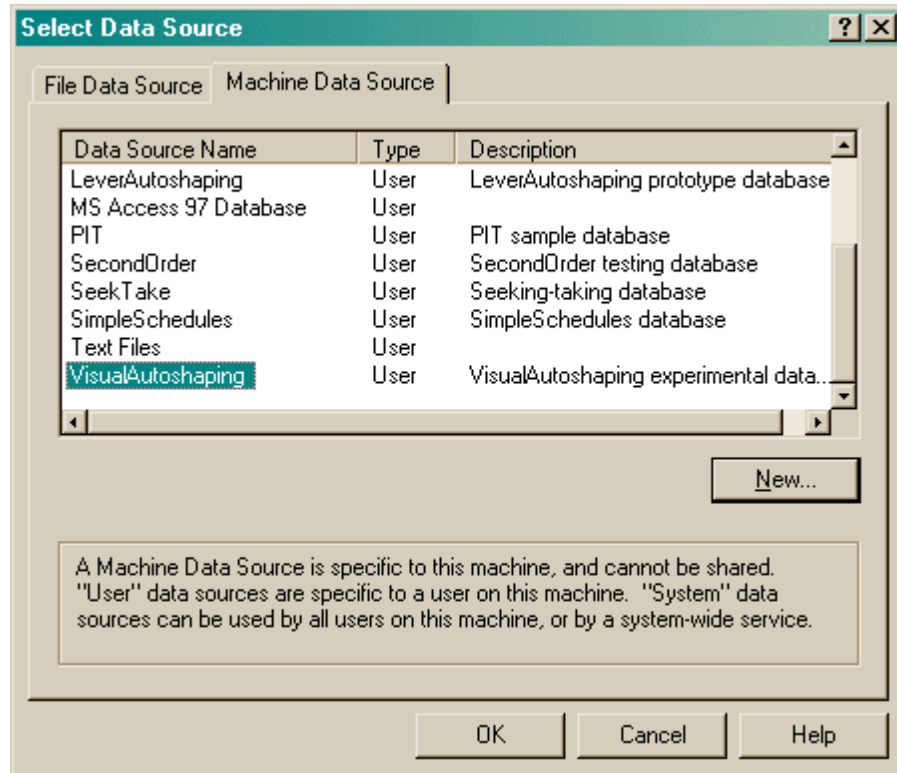
Autoshaping settings

TASK TYPE: Autoshaping Omission Probe
CS+ SIDE: left right
TRIGGER STIMULUS: on rear panel activation on rear nosepoke
 on central nosepoke on central locomotor beambreak
 on completion of VI, regardless of where the subject is
APPROACH CRITERION: Approach CS Touch CS Approach or touch CS
Stimulus duration (s): Post-reinforcement timeout (s):
VI minimum (s): VI maximum (s): Houselight on during task

THIS SESSION

Give trials, starting with trial number

To pick an ODBC database **in advance** of finishing, click *Pick* and you will be offered the ODBC Data Source picker (below). Your choice will be recorded and will apply to this subject from now on (or until you specify a different source).



If you don't specify an ODBC data source now, or you delete the value in the "ODBC data source name" box, you'll be asked to choose when the task ends (and that choice will only apply to the session in progress).

1.5 Task details

Task is a series trials.

Typical stimuli look like this:



*Screenshot of a CS presentation (white stimulus, black background).
The blue border has been added later so you can see the edges of the screen - it's not present in the task.*

Sample experimental methods

A sample that may be wholly inappropriate for your experiment, but which represents a typical way of using the VisualAutoshaping task!

Apparatus. Autoshaping was assessed in the apparatus shown in *Figure ...* Briefly, the apparatus consists of a $X \times Y \times Z$ cm testing chamber with a display screen on one wall and a pellet dispenser located centrally in front of the display. Pressure-sensitive areas of floor (each $X \times Y$ cm) were located directly in front of the display, to the left and right of the dispenser, and also centrally at the rear of the chamber [**AND THESE DAYS, INFRA-RED BEAMS TOO, AND AN EXTRA PELLET DISPENSER**]. The apparatus was controlled by software written in C++ by R.N. Cardinal using the Whisker control system (Cardinal & Aitken, 2001).

Pretraining [NOT SUPPORTED BY THIS TASK]. Rats were first given one session in order to habituate to the test chamber and to collect 45-mg food pellets (Rodent Diet Formula P, Noyes, Lancaster, NH) from the food receptacle. The houselight was illuminated and subjects were placed in the chamber for 5 min with 4–5 pellets placed in and around the dispenser. After this, pellets were delivered on a VT 0–40 s schedule for 15 min.

Acquisition (CS⁺→food, CS→?). On the next day, rats were trained to associate stimuli with the delivery of pellets. Stimuli consisted of 8×18 cm [**MEASURE ON YOUR APPARATUS**] white vertical rectangles displayed on the left and right of the screen for 10 s. One was designated the CS⁺ and the other the CS⁻, counterbalanced between subjects. A trial consisted of presentation of both the CS⁺ and CS⁻ in a randomized order. Following a VI of 10–40s, the program waited for the rat to be located centrally at the rear of the chamber [**OR AS SET BY THE TRIGGER CRITERION**]; this eliminated chance approach to the stimuli, ensured equal

stimulus sampling and allowed accurate measurement of approach latency. One stimulus was then presented for 10 s. The CS+ was always followed immediately by the delivery of food; the CS– was never followed by food. After this, another VI followed, the program waited for the rat to return to the rear of the chamber, and the other stimulus was presented. This procedure ensured that the minimum time between CS+ and CS– presentation was 10 s, and that there were never more than two consecutive presentations of either the CS+ or the CS–.

When a stimulus was presented, activation of one of the two floor panels in front of the screen [**I/R BEAMBREAK THESE DAYS, OR TOUCHING THE STIMULUS**] was scored as an approach, and no further approaches were scored during that stimulus presentation. Rats were trained for a total of 100 trials (two days with 50 trials per day). Approaches to the CS+ and the CS– were scored in blocks of 10 trials and mean approach latency was calculated over 100 trials (Bussey *et al.*, 1997a).

Probe trials (CS+ and CS–). After acquisition, a probe test was performed, consisting of 20 trials in which the CS+ and CS– were presented simultaneously and approaches were measured. Food was not delivered, so this test constituted an extinction trial to the CS+, while the CS– was still a perfect predictor of food absence. The probe test was intended to be a more sensitive test than the acquisition task (in which the subject might form CS–US associations perfectly and yet approach all stimuli), as it forced the subject to make a choice between the CS+ and the CS–.

Omission training. Finally, the contingencies were altered such that approaches to the CS+ prevented the delivery of a food pellet. This manipulation introduced an instrumental contingency directly opposed to the approach response. All other parameters remained the same as in the acquisition phase. There were 50 presentations of the CS+ and of the CS– per session and two sessions were given. As before, only initial approaches were scored; 'successful' omission trials were those in which the CS+ was presented and the subject first approached the CS–, or failed to approach either stimulus.

Index

- V -

VisualAutoshaping
 about 2
 parameters 5
 required devices 2
 using 3